

# MINECRAFT & SCIENCE

## EXPLORING THE INTERNATIONAL SPACE STATION

VERSION 1.0

Introduction

Getting Started

# VIRTUAL CLASS RULES

1. When you enter the Zoom meeting, make sure your camera is on and that you can hear the instructions.
2. Keep your cameras on so that you can see each other and your teacher can see you.
3. While your teacher is beginning the lesson, be sure to mute yourself.
4. If you have a question, you can raise your hand.
5. Please do not open Minecraft Education until you get the okay from your teacher.

# MINECRAFT CONTROLS

- How to look around in Minecraft:
  - *Use the mouse and follow the crosshairs*
- How to walk in Minecraft:
  - Walk Left – *Press A*
  - Walk Right – *Press D*
  - Walk Backwards – *Press S*
  - Walk Forwards – *Press W*
- How to jump in Minecraft:
  - *Press SPACEBAR*

Strafe Left	A
Strafe Right	D
Walk Backwards	S
Walk Forwards	W
Jump/Fly Up	SPACE

# MINECRAFT CONTROLS

- How do you break a block?
  - *Left-Click/Button 1*
- How do you place a block?
  - *Right-Click/Button 2*
- How do choose slots on your hotbar?
  - *Use the scroll wheel on your mouse or press the number keys on your keyboard*
- How do you open and close your inventory?
  - *Open – Press E*
  - *Close – Press E or Esc*

Attack/Destroy	Button1
Use Item/Place Block	Button2
Pick Block	Button3
Inventory	E

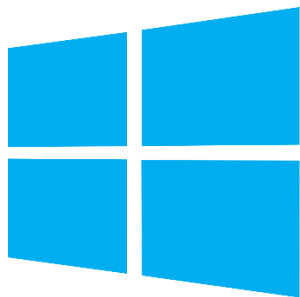


# HARDWARE REQUIREMENTS

Windows version 10 or newer

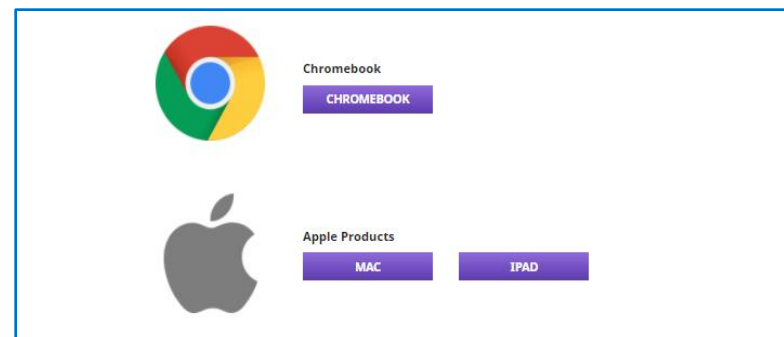
Mac OS version 10:13 or newer

Chromebooks OS version 83 or newer



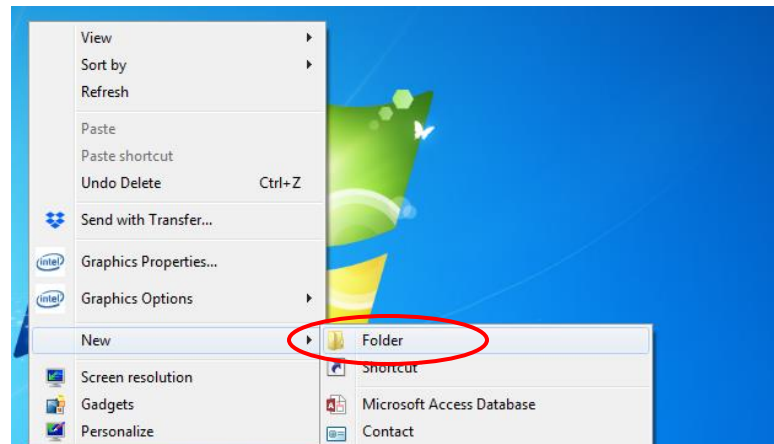
# MINECRAFT: EDUCATION EDITION SOFTWARE

- Make sure you have the Minecraft Education Edition downloaded on your computer.
- If not, go to the Minecraft: Education Edition website <https://education.minecraft.net/get-started/download/>
- Click on the download button for your device
- Follow the instructions on screen



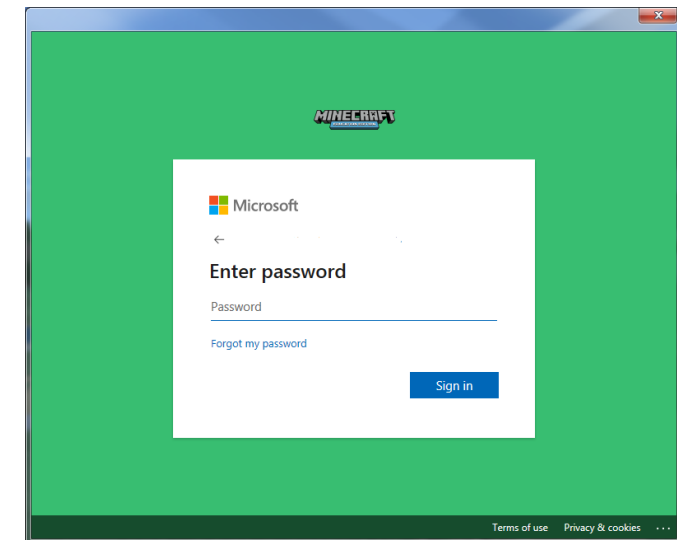
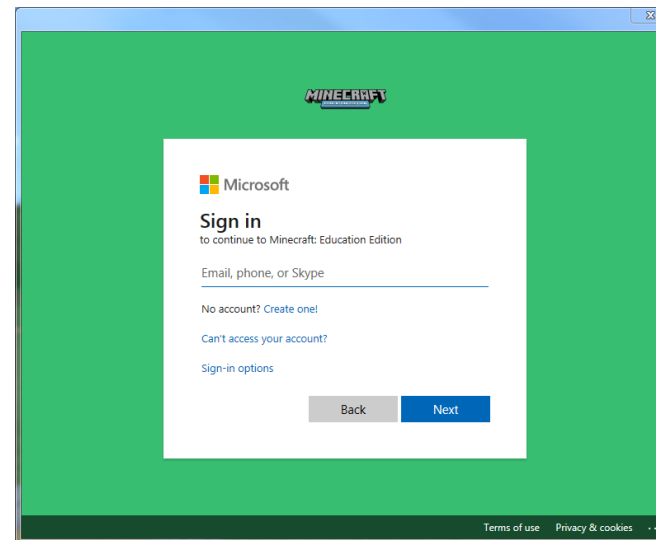
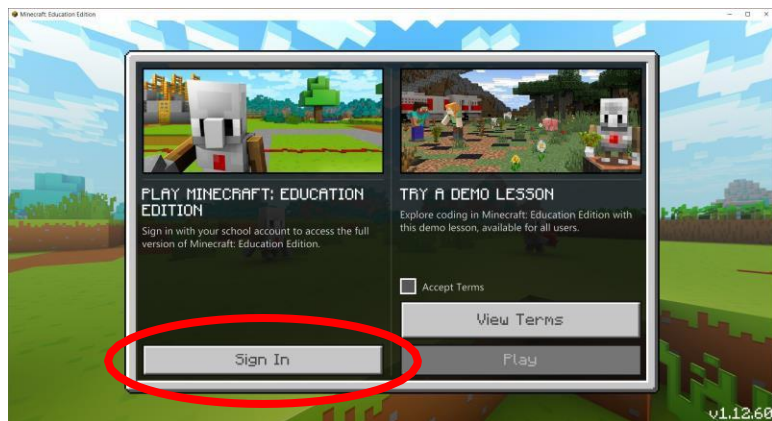
# CREATE A FOLDER

- We will create a new folder on the Desktop to save our work in.
- Right-click on your Desktop.
- Select **New Folder**.
- Rename the folder with your first name and the first letter of your last name. For example, if your name is John Smith you will rename your folder **JohnS**.



# LOG IN TO MINECRAFT

- Each student will receive an email and password.
- Use this email and password to log in to Minecraft.
- Open Minecraft: Education Edition.
- Click *Sign In*.
- Sign in with the information provided for you.





**YOU HAVE COMPLETED THE SET UP, CONGRATULATIONS!**